

## **Welcome**

**Leland Ranch** is a standout Southern Oregon holding that brings together meaningful acreage, great water, and year round outdoor recreation. Spanning 350 acres, the property features roughly 7,690 feet of Graves Creek frontage, with predominantly level terrain and soils well suited for farming, grazing, and productive creek bottom habitat. The land is contiguous and private, offering scale and breathing room that are increasingly difficult to find in today's market.

## **Water**

Water is the cornerstone of the ranch. Includes irrigation water rights totaling 238 acres from Surface Water (Creek), supplemented by an additional 80 acres from an on site pond. In today's market, a water portfolio of this size and flexibility is rare and directly supports agricultural productivity, livestock, and wild game habitat. Graves Creek flows through nearly 1.5 miles of the property, complemented by multiple ponds, strengthening both function and natural appeal. Irrigation infrastructure includes a Pivot that covers ~40 acres along with ~9,000 feet of mainline.

## **Residence and Improvements**

A 2,567 square foot main residence built in 2019 serves as a comfortable headquarters for day to day living. The home offers three bedrooms plus an office and a spacious open concept layout with vaulted ceilings, an open kitchen with large island, and strong natural light. An attached two car garage and practical layout support both everyday living and hosting. Three barns provide utility for equipment, hay, livestock, and storage, and zoning may allow for at least one additional homesite, subject to county approvals, supporting multigenerational or operational flexibility.

## **Hunting and Outdoor Lifestyle**

Outdoor recreation is a defining feature of the property. Located within the Evans Creek Hunting Unit, the land offers strong big game hunting opportunities and carries a proven history of trophy blacktail deer and elk success. A diverse mix of creek bottom habitat, cover, open pasture, and limited hunting pressure supports consistent wildlife activity. Black bear, wild turkey, and other species common to southwest Oregon are also present.

Beyond hunting, the acreage supports hiking, horseback riding, ATV and UTV use, recreational shooting, bird watching, and wildlife photography. Year round Grave Creek adds recreational value while enhancing habitat and scenic character. The property functions equally well as a productive ranch and a private recreational retreat.

## **Resource Use**

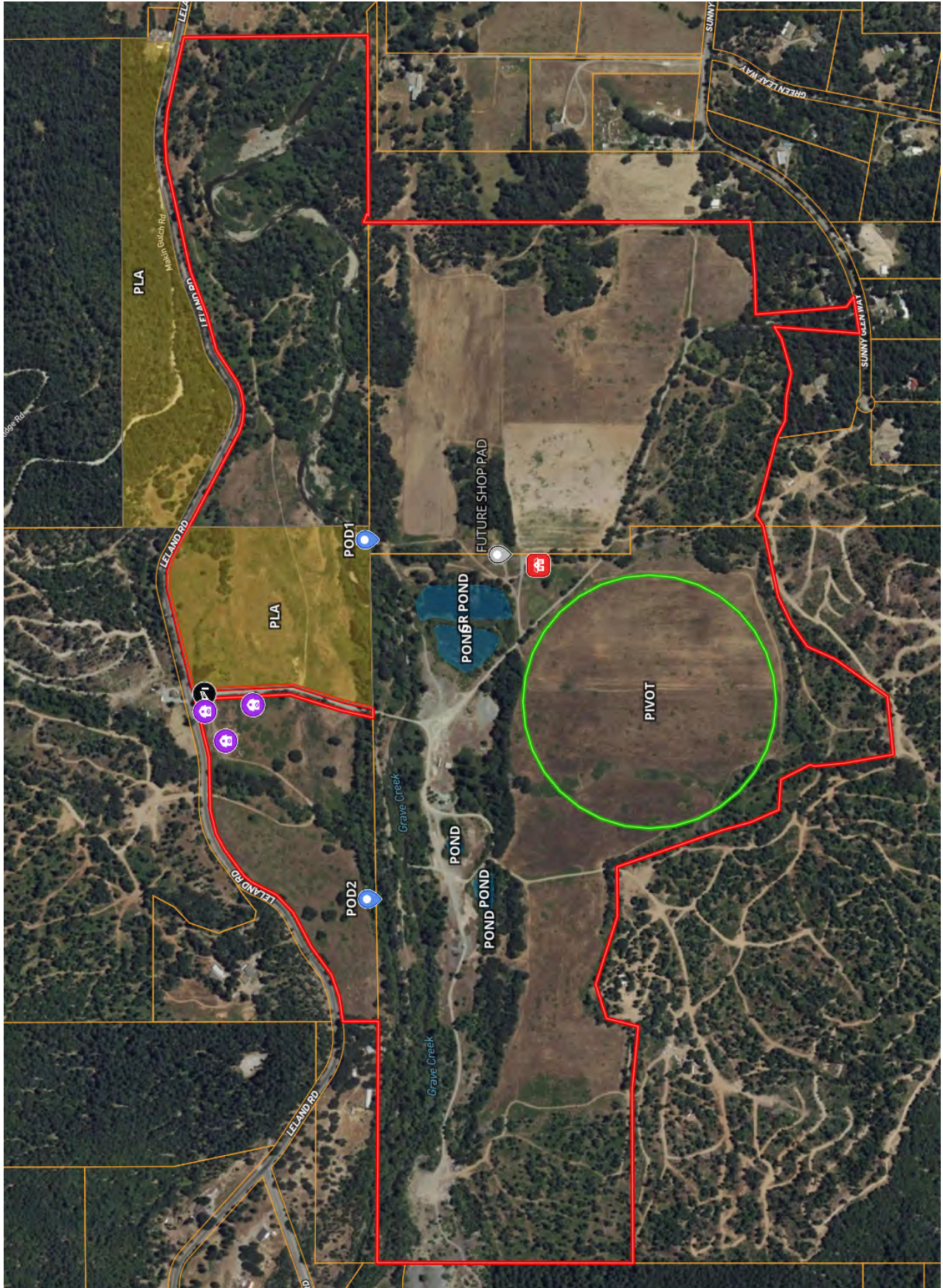
Resource and legacy value add further depth to the opportunity. The property includes an active aggregate permit for gravel within a defined area, providing a unique on site material resource. Leland Ranch also carries a documented history of gold mining, and limited small scale mining may be permissible outside the aggregate area, subject to applicable regulations.

### **Conservation and Stewardship**

Conservation and stewardship opportunities are meaningful throughout the land. Extensive creek frontage provides potential for riparian and habitat restoration projects that support long term stream health and fisheries. Excess water rights may offer opportunities for in stream leasing, and the property is well suited for participation in efficient farming and irrigation programs that balance production with water conservation, soil health, and sustainability.

## **Location**

Regionally positioned along the I 5 corridor between Portland and the Bay Area, Leland Ranch offers convenient access to Southern Oregon communities while maintaining a private rural setting. With limited inventory of large, water rich, contiguous properties in the region, this offering represents a rare opportunity to secure one of Southern Oregon's legacy ranch holdings.



Martin Outdoor Property Group - Leland Ranch (1775 Leland Road)

# Property Identification

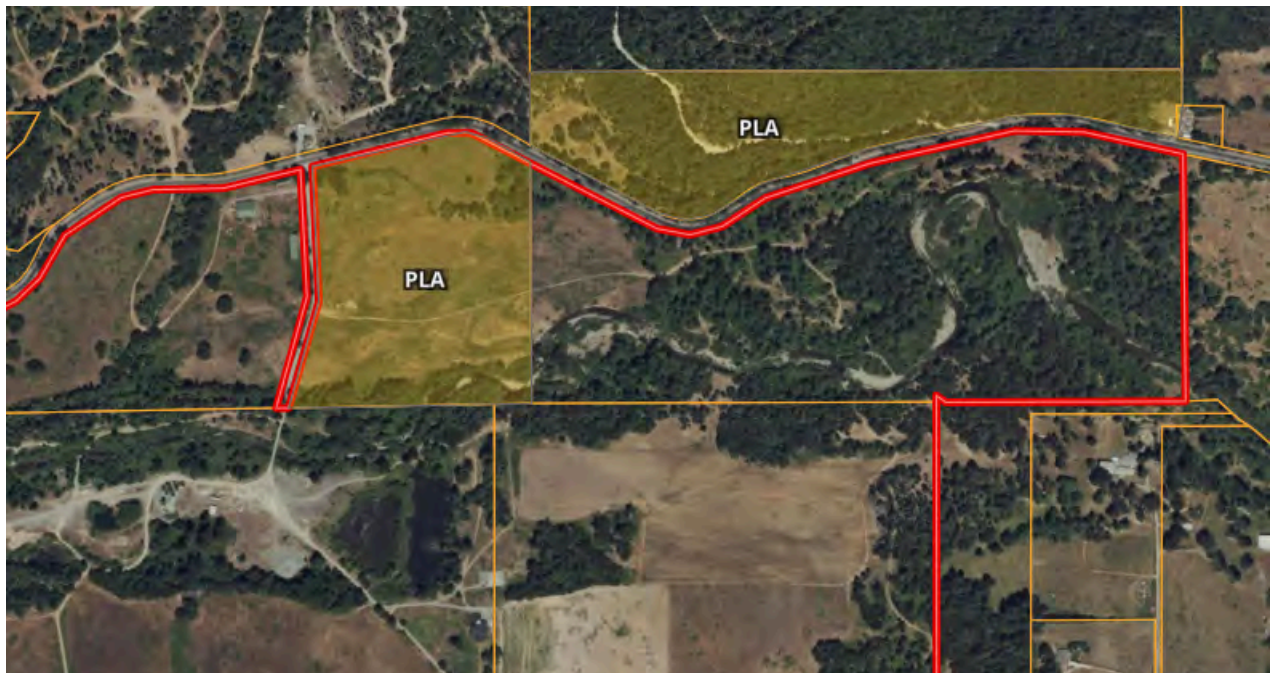
The property has a physical address of 1775 Leland Road, Wolf Creek, Oregon 97497. The ranch is made up of 4 tax lots as shown in the table below.

Property Identification							
Township	Range	Section	Tax Lot	Taxes	Account #	Acres	Zoning
34S	6W	3	400	\$1,058.94	R301059	77.82*	EFU
34S	6W	4	502	\$427.08	R341847	32.56	EFU
34S	6W	9	100	\$3,857.65	R301154	158.96	FC, EFU
34S	6W	10	300	\$827.23	R301199	<u>80.71</u>	EFU, WR
Total						350.05	

\*Estimated acreage after PLA

## Property line Adjustment

A property line adjustment (PLA) is underway between TL500 and TL400. Total acreage of each parcel will remain approximately the same. Currently both TL500 and TL400 have land on each side of Leland Road. Upon completion of PLA, the entirety of TL400 will be located to the south of Leland Road and the entirety of TL500 will be to the north of Leland Road.

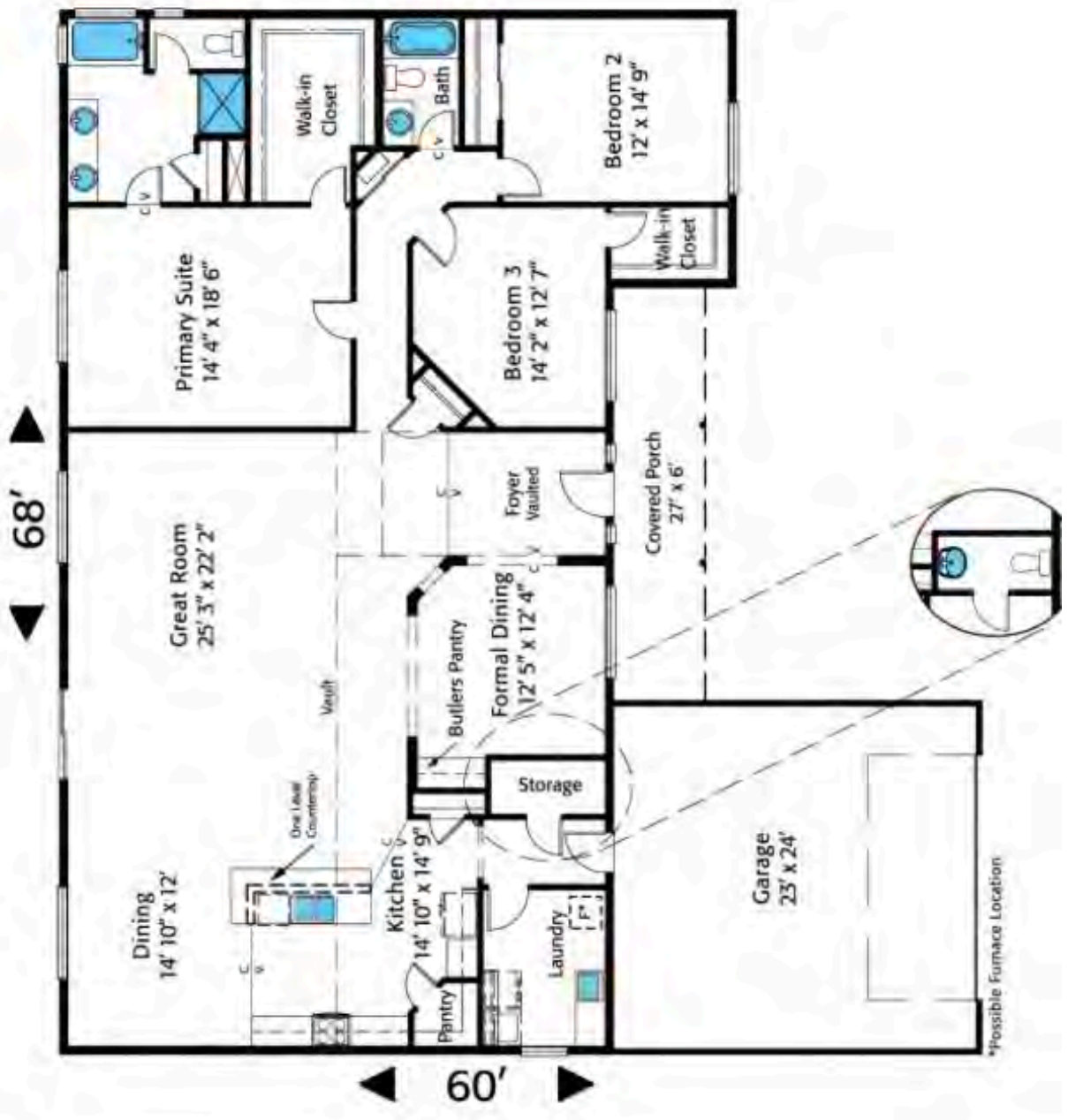


# Property Details

<b>Access</b>	Via multiple dirt/gravel driveways off of paved Leland Road and Sunny Glen Way
<b>Present Land Use</b>	Ranch and Outdoor Lifestyle Property
<b>2025 Taxes</b>	\$6,170.90
<b>Zoning</b>	EFU (Exclusive Farm Use), WR (Woodlot Resource)
<b>Elevations</b>	+/- 1,120' - +/- 1,200' above sea level
<b>Topography</b>	Level
<b>Soils</b>	See soils section
<b>Water Rights</b>	See water rights section
<b>Live Water</b>	+/- 7,690' of frontage along Graves Creek + Multiple Ponds. See the recreation section.
<b>Domestic Water</b>	Private well
<b>Sanitation</b>	The home is served by a DEQ approved standard septic system for a 3 bedroom residence. The system was completed and certified on January 16, 2020. It includes a 1,500 gallon septic tank and a pumped drainfield with approximately 225 feet of rock and pipe trenches using serial distribution.
<b>Power Service</b>	4 Total Services from Pacific Power Co. Single Phase: Main House & Barn 3 Phase: POD1 & POD2
<b>Propane</b>	The home is served by a 500-gallon buried propane tank located below the house. Propane supplies a gas cook stove in the kitchen, a propane on-demand hot water heater, and a propane fireplace in the living room.
<b>Internet</b>	Starlink Satellite Internet ~ Starlink typically advertises download speeds of 25 to 220 Mbps and upload speeds of 5 to 20 Mbps, depending on location, network demand, and satellite coverage. Latency is generally advertised in the 20 to 60 millisecond range, which is generally suitable for video calls, streaming, and most online work.

# Main House

<b>House</b>	<p>The main residence was constructed between 2019 and 2020 and contains approximately 2,567 square feet of living space. The home features 3 bedrooms, 2.5 bathrooms, and a private office, with a well designed open concept layout that connects the living room, dining area, and kitchen.</p>
<b>Interior Layout &amp; Features</b>	<p>The home offers a spacious open living area with an open kitchen featuring a large island, grand vaulted ceilings, and large windows with expansive views. Flooring includes acacia hardwood throughout most of the home, tile in bathrooms and laundry areas, and carpeted bedrooms. Interior finishes include solid knotty alder interior doors and cabinetry, upgraded interior doors, and quality materials consistent with a modern ranch residence. The primary suite includes a private bathroom.</p>
<b>Garage</b>	<p>An attached two car garage measures approximately 23 feet by 24 feet, totaling about 552 square feet</p>
<b>Construction &amp; Systems</b>	<p>The structure was built as a super shell by the builder, completed from foundation through drywall, with final interior finishes completed by the owner. A professional finish carpenter was contracted for detailed finish work.</p> <ul style="list-style-type: none"><li>• Stick framed construction</li><li>• Composition roof</li><li>• Concrete board lap siding</li><li>• Electric heat pump with central heating and air conditioning (Intentionally oversized to allow for a future addition)</li></ul> <p>320 Amp electrical service</p>



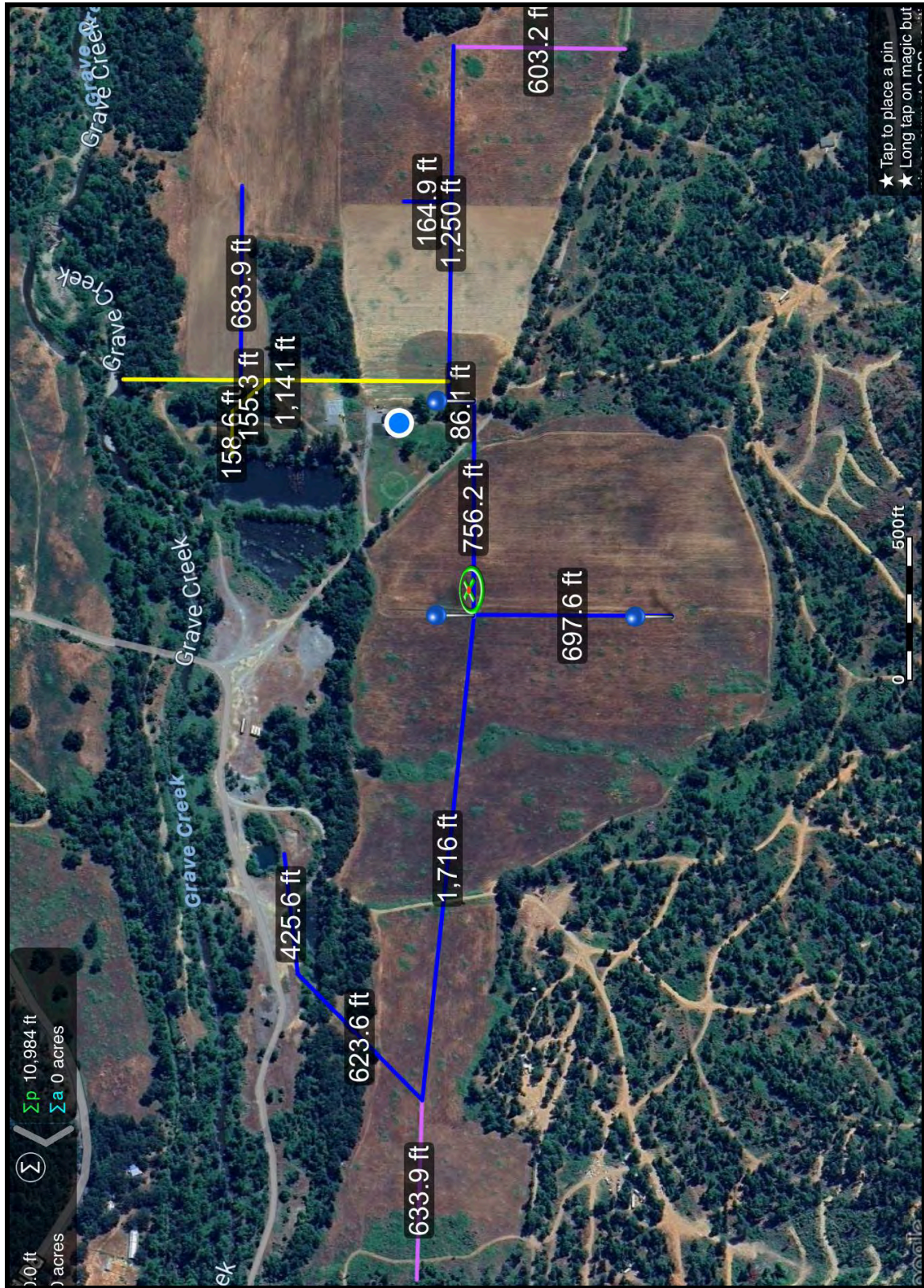
## Outbuildings and Structural Improvements

<p><b>Main Barn</b></p>	<p>Approximately 4,800 square feet, in good overall condition</p> <p>Historic barn footprint approximately 70 feet by 90 feet</p> <p>Professionally preserved with a new concrete floor and concrete stem walls</p>
<p><b>Machine Shed</b></p>	<p>Approximately 2,400 square feet</p> <p>Additional equipment and general storage</p>
<p><b>General Purpose Building</b></p>	<p>Approximately 1,080 square feet</p> <p>Additional storage space</p>
<p><b>Future Shop Pad</b></p>	<p>Commercial grade shop pad measuring approximately 50 feet by 50 feet</p> <p>400-amp electrical service available for future home expansion or additional residential improvements</p>

## Irrigation System

<p><b>Main Pump</b></p>	<p>The property includes a 30 HP irrigation pump (new in 2019) with a 6-inch suction. Depending on the field being irrigated, the pump typically delivers approximately 600 gallons per minute.</p>
<p><b>Mainlines</b></p>	<p>Approximately 9,000 feet of buried mainline was installed in 2018-2019. A 12-inch mainline runs to the area near the main house, where it branches into two 6-inch lines—one running east and one running west. From these, 4-inch spur lines extend to serve the individual fields. <u><a href="#">See attached map.</a></u></p>
<p><b>Center Pivot</b></p>	<p>A Greenfield Mini Pivot system currently serves approximately 38 to 40 acres. The pivot is approximately 660 feet in length with 8 foot tower height and is equipped with an end gun. The system was <b>relocated to the property in 2025</b> and is in fair to good condition, consistent with normal agricultural use. Typical operating demand is approximately 250 to 300 GPM, with actual flow dependent on pressure settings and field conditions. The pivot is powered by a 3,500 watt dual fuel generator capable of operating on gasoline or propane. <u><a href="#">See Exhibit</a></u></p>

# Mainline Map



# Water Right Summary

Certificate / Registration	Water Type	Authorized Acres	Flow (CFS)	Flow (GPM)
15550	Surface Water	22	0.27	121
96296	Surface Water	115	1.79	803
96295	Surface Water	65	1.09	489
96297	Surface Water	36	0.60	269
GR #158	Groundwater	80	1.34	600
<b>TOTAL - Surface Water</b>	<b>Surface</b>	<b>238</b>	<b>3.75</b>	<b>1,683</b>
<b>TOTAL - Groundwater</b>	<b>Groundwater</b>	<b>80</b>	<b>1.34</b>	<b>600</b>
<b>TOTAL - ALL RIGHTS</b>	<b>—</b>	<b>318</b>	<b>5.09</b>	<b>2,283</b>

# Water Right Details

<b>Certificate No. 15550</b>	<p>Priority Date: July 21, 1943            Authorized Acreage: 22 acres            Irrigation Season: April 2 - October 31            4 acres - 0.05 CFS (22.4 GPM), Mackin Gulch            18 acres - 0.22 CFS (98.7 GPM), Graves Creek            Maximum volume: 4.5 acre feet per acre per year</p>
<b>Certificate No. 96296</b>	<p>Priority Date: 1891            Authorized Acreage: 115 acres            Authorized Flow: 1.79 CFS (803 GPM)            Source: Graves Creek            Irrigation Season: April - October</p>
<b>Certificate No. 96295</b>	<p>Priority Date: 1891            Authorized Acreage: 65 acres            Authorized Flow: 1.09 CFS (489 GPM)            Source: Graves Creek            Irrigation Season: April - October</p>
<b>Certificate No. 96297</b>	<p>Authorized Acreage: 36 acres            Tract 1: 2 acres - Priority 1891 - 0.03 CFS (13.5 GPM)            Tract 2: 34 acres - Priority 1873 - 0.57 CFS (256 GPM)</p>

	<p>Source: Graves Creek Irrigation Season: April – October</p>
<p><b>Groundwater Registration No. 158</b></p>	<p>Registration Date: December 31, 1945 Authorized Acreage: 80 acres Authorized Rate: 600 GPM Source: Groundwater Irrigation Season: April – October</p>
<p><b>WATER RIGHTS WORK COMPLETED</b></p>	<p>Evidence of Use investigations completed</p> <p>Historic points of diversion evaluated and documented</p> <p>OWRD Transfer Application T 13515 approved</p> <p>Points of diversion relocated to two approved locations on the ranch</p> <p>Historic PODs for Certificates 96296 and 96297 changed from a former Alto Ditch not shown on decree maps</p> <p>All survey work completed by a Licensed Professional Surveyor</p> <p>All water rights work completed by a Certified Water Rights Examiner (CWRE)</p> <p>GIS mapping completed for points of diversion and places of use</p> <p>Place of use boundaries verified</p> <p>Field inspections of diversion structures and irrigation systems performed</p> <p>Irrigation infrastructure improvements completed</p> <p>Water right maps prepared and updated</p> <p>Historic water use documentation compiled</p> <p>All required OWRD filings completed and approved</p> <p>New certificates issued reflecting approved changes</p>
<p><b>NOTES &amp; DISCLAIMERS</b></p>	<p>Property acreage is approximately 350 acres ±.</p> <p>Authorized acreage totals may overlap depending on historical irrigation practices.</p>

	<p>Late season water availability may vary due to upstream water right users; a call for water through the local Watermaster may be necessary.</p> <p>Although the flow rates identified herein reflect legally certificated and registered diversion rates, actual late season diversion capacities may be reduced due to hydrologic conditions, streamflow availability, and priority administration, and such certificated rates may not always be physically achievable.</p> <p>This summary is provided for informational and transactional purposes only and does not constitute a legal determination of water right validity.</p>
--	---

## Outdoor Recreation

<p><b>Graves Creek and Ponds</b></p>	<p>Approximately 1.5 miles of scenic Graves Creek frontage runs through the property, supporting winter steelhead and salmon habitat. The land also includes five ponds, with the largest exceeding 2.5 acres, offering fishing opportunities for bass, bluegill, and catfish.</p>
<p><b>Hunting and Wildlife</b></p>	<p>Located within the Evans Creek Hunting Unit and Oregon Game Management Unit 28, the property offers strong big game and upland hunting opportunities. A diverse mix of creek bottom habitat, timbered cover, open pasture, and upland ground supports healthy populations of blacktail deer, elk, black bear, wild turkey, ducks, geese, quail, and chukar. The property has a history of trophy deer and elk success and is currently eligible for landowner antlerless elk tags, while also being in a general season area for bull elk. Additional OTC tags are available for late season archery deer hunting (rut).</p>
<p><b>Hiking and Horseback Riding</b></p>	<p>Expansive acreage and varied terrain, including open meadows, gentle benches, and creek corridors, provide ample room for scenic, uninterrupted travel across all areas of the land.</p>
<p><b>ATV and UTV</b></p>	<p>The size and layout of the land are well suited for ATV and UTV use. Existing ranch roads and open ground allow for efficient access, recreation, and property management</p>

<b>Shooting</b>	The scale and privacy of the property offer ideal settings for recreational shooting, accommodating everything from pistols to long-distance shooting over 1,000 yards.
<b>Bird Watching and Wildlife Photography</b>	Diverse habitats, including creek corridors, irrigated pasture, timbered areas, and open ground, attract a wide range of bird species and wildlife, creating excellent photography and viewing opportunities throughout the year.

## Other Resources and Opportunities

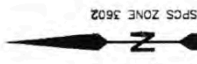
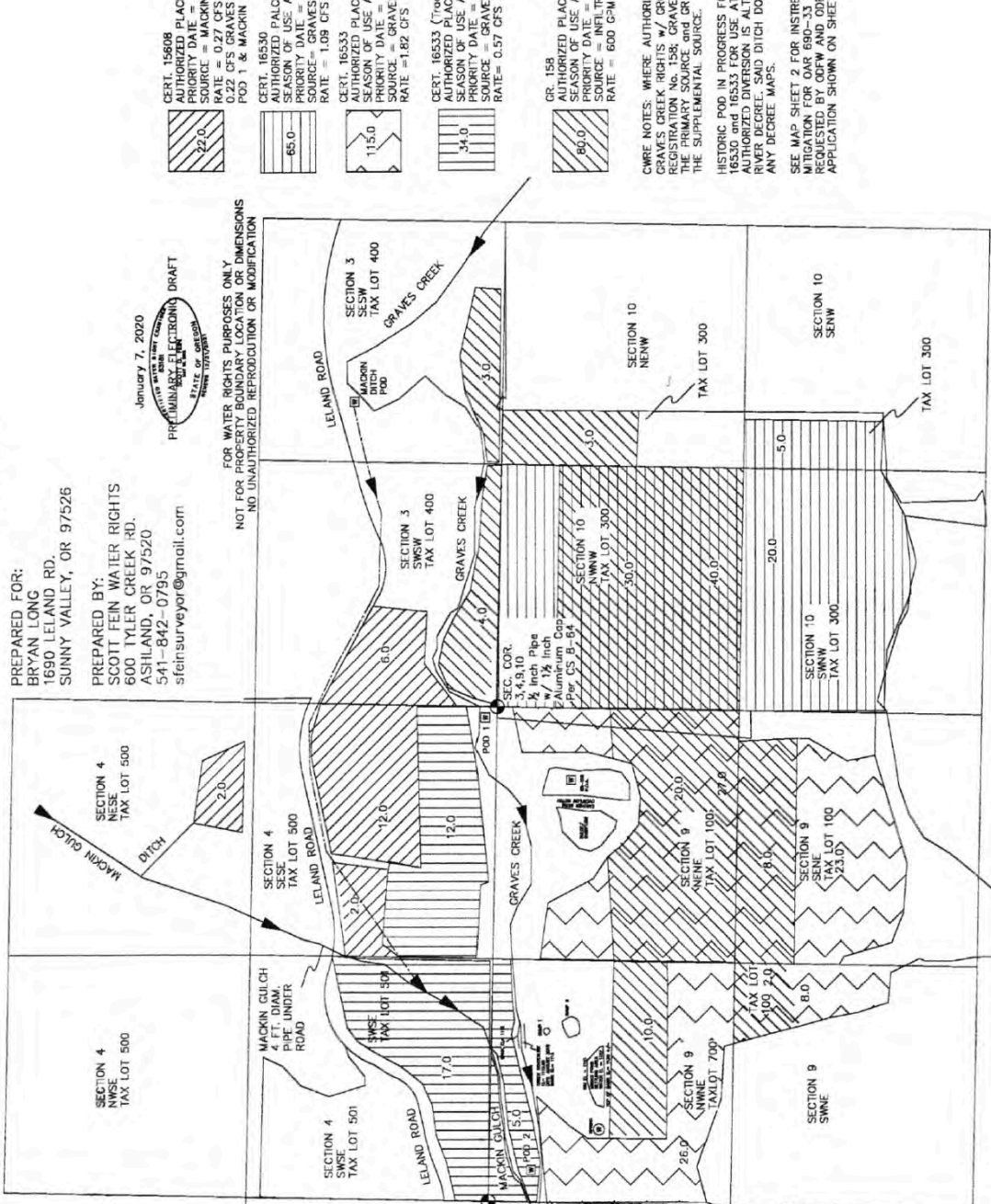
<b>Aggregate and Mining Use</b>	Approximately 35 acres are covered under a current limited aggregate exemption tied to a historically disturbed area from a major 1930s era gold operation. The exemption allows for rock and gravel sales, along with certain mining or ground disturbing activities, within the permitted acreage. Annual renewal is approximately \$2,300, and material sold off site is subject to a \$0.03 per ton fee, while material used on the property is exempt.
<b>Gold History and Mineral Potential</b>	<p>The property lies within a well known gold bearing region of Josephine County, where a significant mining operation occurred in the 1930s and ended during World War II. Portions of the property were part of that historic activity, adding a unique legacy component to the land. Limited testing has produced positive results; however, no representations are made regarding quantity, quality, or economic viability of mineral resources.</p> <p>Outside the preexisting approved aggregate use area, Oregon allows <b>limited, small scale gold mining</b> under simplified rules when surface disturbance is minimal. Activities such as panning and light mechanized work may be permitted without a full mining permit, provided impacts remain small and environmental standards are met.</p> <p>More extensive permitting is generally required when mining expands in size or intensity, including larger mechanized</p>

	<p>operations, disturbance of one acre or more, or impacts to streams, wetlands, or fish habitat. Oversight may involve DOGAMI, the Oregon Department of State Lands, the Oregon Department of Environmental Quality, the Oregon Department of Fish and Wildlife, and county land use authorities. Buyers should consult with DOGAMI or a qualified professional to confirm allowable activities based on site specific conditions.</p> <p>Seller intends to include a partial mineral rights reservation for precious metals extraction. See Owners Exhibit Section.</p>
<p><b>Forest Management and Fire Risk Reduction</b></p>	<p>Commercial thinning has been completed across forested stands on the property to improve overall forest health and access. These treatments reduced accumulated fuels and ladder fuels, lowering wildfire risk and supporting safer long term management. Continued stewardship can help maintain healthier timber conditions and improved defensible space.</p>
<p><b>Additional large Tract Homesite</b></p>	<p>Based on the approximately 350 total acres and current Exclusive Farm Use (EFU) zoning, the property may be eligible for at least one additional dwelling, subject to approval under the Josephine County Land Use Code and applicable state EFU statutes. Because EFU dwelling approvals are highly fact specific, consultation with a qualified land use planner or land use attorney is strongly recommended.</p>
<p><b>Accessory Farm Dwelling</b></p>	<p>In addition to a primary farm dwelling, the property may also be eligible for an Accessory Farm Dwelling, subject to approval under the Josephine County Land Use Code and applicable Oregon EFU statutes. Accessory farm dwellings are intended to support ongoing farm operations and are typically allowed only when specific farm use and income criteria are met. Prospective buyers are strongly encouraged to consult with a qualified land use planner or land use attorney.</p>
<p><b>Other Entitlement Opportunities</b></p>	<p>Farm Related Buildings and Structures</p> <ul style="list-style-type: none"> <li>● Barns, equipment storage, livestock facilities, processing areas, and other ag structures are often permitted subject to setbacks and standards.</li> </ul> <p>Agricultural Processing and Value Added Use</p> <ul style="list-style-type: none"> <li>● Potential for on site processing, packing, storage, or</li> </ul>

	<p>direct to market activities if allowed under EFU and the scale remains consistent with farm use.</p> <p><b>Agritourism and Farm Stands</b></p> <ul style="list-style-type: none"> <li>• Possible pathways for farm stands, tours, events, or limited agritourism, subject to county standards, traffic, parking, and use limitations.</li> </ul>
<p><b>Water and Conservation Opportunities</b></p>	<p><b>In Stream Leasing of Water Rights</b></p> <ul style="list-style-type: none"> <li>• Excess water rights may provide opportunities for in stream leases, subject to OWRD rules and program requirements.</li> <li>• SEE OWNERS EXHIBIT SECTION</li> </ul> <p><b>Habitat or Farm Restoration Projects</b></p> <ul style="list-style-type: none"> <li>• Potential for riparian restoration, bank stabilization, fish habitat work, or wetland enhancement, also farm improvements to help water quality, etc. Sometimes supported by cost share programs or grants.</li> <li>• Best Resources are NRCS, Rogue River Watershed Counsel, and Oregon Dept. of Fish and Wildlife.</li> </ul> <p><b>Conservation Easement</b></p> <ul style="list-style-type: none"> <li>• Possible option to protect land long term while potentially providing tax or estate planning benefits.</li> </ul>

(December 2019)

FAITH VALLEY RANCH  
 G-18792 REVISED WATER RIGHTS APPLICATION MAP  
 AUTHORIZED PLACE OF USE  
 T34S R6W SECTION 3,4,9,10 W.M.  
 ROGUE RIVER BASIN, JOSEPHINE COUNTY, OR



SPCS ZONE 3602  
 1 INCH = 400 FEET

AUGUST-SEPTEMBER 2018 & AUGUST 2019  
 FIELD SURVEY  
 NAVD 88 ELEVATIONS SHOWN

SUMP 1 P.O.A.  
 FROM NE COR. SEC. 9: 5285 FT., W1788 FT.  
 FROM NW COR. SEC. 9: 1112 FT., W1000 FT.  
 DEPTH: 10.0 FT.  
 DISTANCE TO GRAVES CREEK CL. = 130 FT.

SUMP 2  
 FROM NE COR. SEC. 9: 5400 FT., W1740 FT.  
 FROM NW COR. SEC. 9: 1029 FT., W1000 FT.  
 DEPTH: 10.0 FT.  
 DISTANCE TO GRAVES CREEK CL. = 240 FT.

1/2 COR. 9  
 SURVEYOR  
 BRASS CAP  
 W.C.

PREPARED FOR:  
 BRYAN LONG  
 1690 LELAND RD.  
 SUNNY VALLEY, OR 97526

PREPARED BY:  
 SCOTT FEIN WATER RIGHTS  
 600 TYLER CREEK RD.  
 ASHLAND, OR 97520  
 541-842-0795  
 stein@surveyor@gmail.com

January 7, 2020  
 PRELIMINARY DRAFT  
 STATE OF OREGON  
 PLANNING DIVISION

FOR WATER RIGHTS PURPOSES ONLY  
 NOT FOR PROPERTY BOUNDARY LOCATION OR DIMENSIONS  
 NO UNAUTHORIZED REPRODUCTION OR MODIFICATION

CERT. 15608  
 AUTHORIZED PLACE OF USE- IRRIGATION  
 PRIORITY DATE = JULY 21 1943  
 SOURCE = MACKIN GULCH & GRAVES CREEK  
 RATE = 0.754 CFS  
 POOL 1 & MACKIN DITCH

CERT. 16530  
 AUTHORIZED PLACE OF USE: IRRIGATION  
 SEASON OF USE: APRIL THROUGH OCTOBER  
 PRIORITY DATE = 1881  
 SOURCE = GRAVES CREEK  
 RATE = 1.09 CFS

CERT. 16533  
 AUTHORIZED PLACE OF USE: IRRIGATION  
 SEASON OF USE: APRIL THROUGH OCTOBER  
 PRIORITY DATE = 1891  
 SOURCE = GRAVES CREEK  
 RATE = 1.82 CFS

CERT. 16533 (Tract No. 2)  
 AUTHORIZED PLACE OF USE: IRRIGATION  
 SEASON OF USE: APRIL THROUGH OCTOBER  
 PRIORITY DATE = 1873  
 SOURCE = GRAVES CREEK  
 RATE = 0.57 CFS

GR. 158  
 AUTHORIZED PLACE OF USE- IRRIGATION  
 SEASON OF USE: APRIL THROUGH OCTOBER  
 PRIORITY DATE = 1943  
 SOURCE = TRINATION TRENCH  
 RATE = 600 GPM

CWRE NOTES: WHERE AUTHORIZED POOL OVERLAPS  
 GRAVES CREEK RIGHTS W/ GROUNDWATER  
 RIGHTS UNDER GR. 158, THE RIGHTS SHALL BE  
 THE PRIMARY SOURCE AND GR. 158 SHALL BE  
 THE SUPPLEMENTAL SOURCE.

HISTORIC POOL IN PROGRESS FOR CERTIFICATES  
 16530 and 16533 FOR USE AT POOL 1 & 2.  
 DITCHES AND DITCHES SHALL BE ROGUE  
 RIVER DECREE SAID DITCH DOES NOT APPEAR ON  
 ANY DECREE MAPS.

SEE MAP SHEET 2 FOR INSTREAM TRANSFER FOR  
 MITIGATION FOR OAR 680-33. REVIEWS AS  
 APPLICABLE TO THIS APPLICATION. RESULTS OF THIS  
 APPLICATION SHOWN ON SHEET 2.

MACKIN DITCH &  
 POINT OF DIVERSION 1 & 2  
 Authorized per Transfer B-94 (1956)  
 Certificate 15608  
 Source: Graves Creek

Historic Point of Diversion  
 Certificate 16533 (Tract No. 1)  
 Certificate 16530  
 POINT OF DIVERSION 1 & 2 (See Notes)

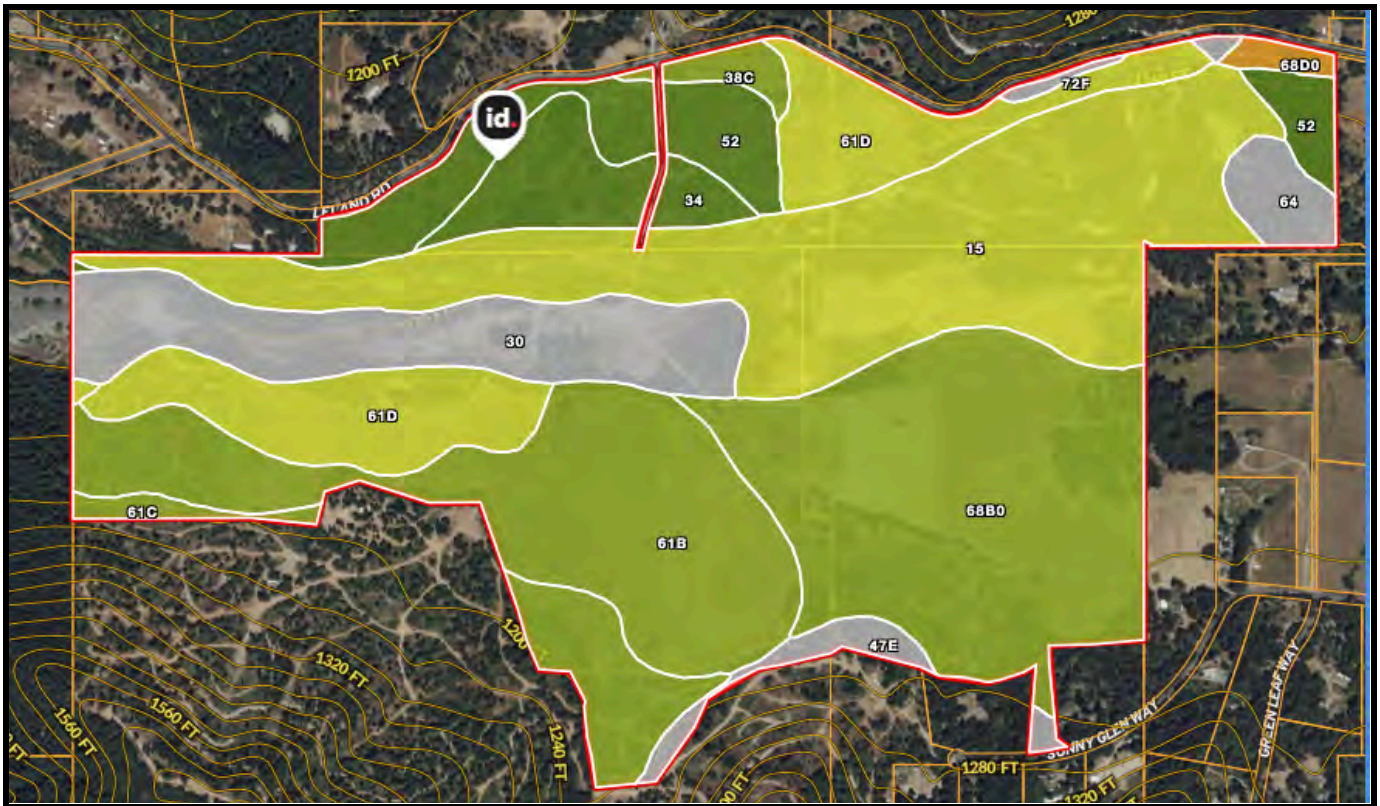
MACKIN DITCH  
 From NE COR. SEC. 9  
 1650 FT., E1850 FT.

POOL 1 NE COR. SEC. 9  
 165 FT., W80 FT.

POOL 2  
 From NE COR. SEC. 9  
 5165 FT., W2340 FT.  
 5400 FT., W415 FT.

GR. 158 P.O.A.  
 From NE COR. SEC. 9  
 5400 FT., W415 FT.


# Soils Map



## NRCS Soils & Land Capability Summary

### Leland Ranch – Approximately 349.6 Acres

The soils at Leland Ranch are dominated by productive loams and loam complexes commonly used for irrigated pasture, hay production, and grazing in Southern Oregon. Most irrigable acreage lies on gentle slopes with favorable soil textures, while steeper or more gravelly soils transition into grazing, wildlife habitat, and open space.

|  Boundary 349.6 ac

SOIL CODE	SOIL DESCRIPTION	ACRES	%	CPI	NCCPI	CAP
15	Camas-Newberg complex	85.26	24.39	0	58	4w
68B0	Selmac loam, 2 to 7 percent slopes, low precip	70.47	20.16	0	58	3e
61B	Pollard loam, 2 to 7 percent slopes, MLRA 5	54.29	15.53	0	72	3e
61D	Pollard loam, 12 to 20 percent slopes	38.07	10.89	0	66	4e
30	Dumps	32.97	9.43	0	-	-
52	Kerby loam	23.04	6.59	0	76	2s
34	Evans loam	14.41	4.12	0	87	2w
61C	Pollard loam, 7 to 12 percent slopes	14.15	4.05	0	67	3e
64	Riverwash	5.59	1.6	0	-	-
47E	Josephine gravelly loam, 20 to 35 percent slopes	5.33	1.52	0	65	-
38C	Foehlin gravelly loam, 3 to 12 percent slopes	3.16	0.9	0	74	3e
68D0	Selmac loam, 7 to 20 percent slopes, low precip	1.82	0.52	0	59	6e
72F	Speaker-Josephine gravelly loams, 35 to 55 percent south slopes	0.78	0.22	0	33	-
1D	Abegg gravelly loam, 12 to 20 percent slopes	0.26	0.07	0	64	4s
TOTALS		349.6(	100%	-	57.6	3.3